

PK's ELECTRICAL **WHOLESALE**



T: 017 647 5888

F: 017 647 2864

E: sales@pkelectrical.co.za

W: www.pkelectrical.co.za

9 Moses Kotane Street | Bethal | 2310

Level 1B-BBEE Contributor with a 51% "BWO" status

Introduction:

PK's *ELECTRICAL WHOLESALERS* was founded August 1991 in Milanpark, Bethal, Mpumalanga.

In April 1996 we moved to our current location at 9 Moses Kotane Street | Bethal | Mpumalanga.

PK's *ELECTRICAL WHOLESALERS* is well known for the quality products we sell and the excellent services we provide to our customers in Bethal and surrounding areas for the past 26 years.

We are a Level 1 B-BBEE Contributor with a 51% “BWO” status.

Our showroom warehouse is situated in the central heartbeat of the Mining and Power Station Industry.

This facility provides us with 300 square feet of warehouse space stocking over 4 000 different items.

We have 15+ parking spaces and 1 loading dock.

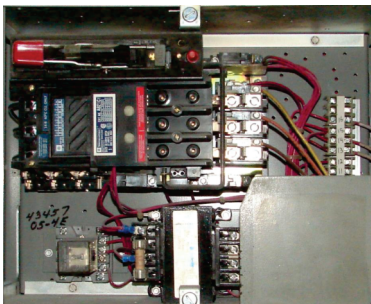
We maintain inventory levels that enables us to serve our customers with timely solutions and excellent deliveries.

Our primary business is to supply and service the Corporate, Private, Contractors, Mining Industries and Power Generating Companies.

We have a proven track record.

We are a service orientated company and offer our clients Efficient and Reliable products.

We also supply the whole range of Electric Motors, Starters, Distribution Boards and Motor Control Centres.



PK's

ELECTRICAL WHOLESALERS

Our Motto::

“WE STAKE OUR REPUTATION ON THE BRANDS WE REPRESENT”

PK's ELECTRICAL WHOLESALERS regards itself as an Ethically Sound Business whose Practice Ensures that the Highest Standards are Maintained.

We align ourselves with Manufacturers who are known for Quality Products Delivered on Time at Competitive Prices.

Our Purpose is to Provide the Right Solutions to our Customers the First Time, Every Time.

This holds True for all Market Segments from Automation Products to Lighting, Lamps, Energy Saving and Construction products.

The Company Philosophy stems from its Family Orientated History which Leads to Employee and Customer Satisfaction.

This Philosophy has enabled us to maintain Long Term Relationships with both our Customers and our Vendors.

Our Principles are Customer Driven, as we Constantly Source the Best and Newest Products at Competitive Prices.



PK's

ELECTRICAL WHOLESALERS

Excellent Service & Sales Support:

Our Company's Success is due to our Staff's Dedication to Excel in Delivery and Service.

We have Two Delivery Vehicles Operating in Bethal and Surrounding areas and we Deliver Free of Charge either from our Extensive Stock on Hand or Straight from One or More of our Suppliers - Fast, Efficient and with Flexibility.

One of the more Important aspects of our Business is the High Technical Knowledge of our Employees.

We are Continuously Expanding our Stock with the Newest and Best Products the Market has to Offer and our Employees gets Regular Training on all the New Products.

This Results in our Customers being given First Class Advice and Excellent Service, as our Technicians understands the Customer's Requirements and are Able to Fulfill their Needs Timeously and Efficiently.



Some of our Brands:

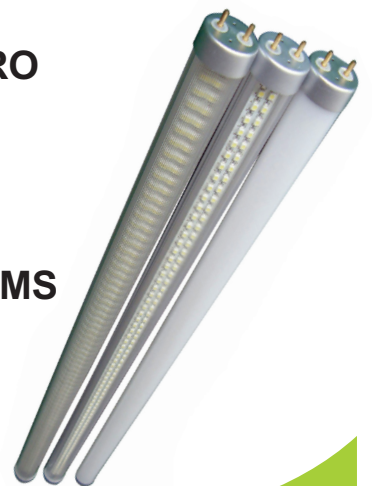
PK's Electrical Wholesalers Endeavor to Provide a Complete Range of Electrical Solutions in the Most Convenient Way Possible. We Strive to Continuously Supply Wholesale and Industrial Customers with Practical and Affordable Solutions to all their Electrical Needs. The Company is Known for its Premium Brands and Vast Product Range that Allows Ample Choice for all Target Markets.

- 3M
- ABB
- ABEDARE
- ACCENT
- ACDC DYNAMICS
- AEG
- AKERSTRÖMS
- ALCOLIN
- ARDIC
- ARNOCANALI
- AUCOM
- AUER SIGNALGERÄTE
- BOSAL
- BRADY
- BANSHEE SIRENS
- C&S
- CABRICAL
- CBI
- CCG
- CHORUS
- CLIPSAL
- COMEPI
- CONDOR
- CONTREL
- COOPER BUSSMANN
- CRABTREE
- CRC
- CUTLER HAMMER
- CVS
- DATALOGIC
- DEHN
- DELTA DESIGN
- DEWALT
- DINEL
- DTS
- DURACELL
- EFAPEL
- ELECTROLINE
- ELLIES
- EMKO
- ENERGIZER
- ENTES
- ENTRELEC
- ERICO
- ESPA
- EUROCLAMP
- EUROLUX
- EVEREADY
- EVERSPRING
- FLASH
- FLUKE
- FRONIUS
- FULL GAUGE
- FULLEON
- GAP
- GAVE
- GEC/ACTOM
- GEDORE
- GELSA
- GEMINI
- GENLUX LIGHTING
- GEWISS
- GIC
- GSM COMMANDER
- HARTING
- HELLERMANN TYTON



Some of our Brands:

- ILINOX
- ITALTRONIC
- JOINTMASTER
- KATKO
- KLAXON
- L.A.P.
- LEGRAND
- LITTLE OU
- MAJOR TECH
- MAKITA
- MASTECH
- MAT ELEC
- MCE
- MERZ
- METABO
- METREL
- METRO
- NORTON
- O.ERRE
- O-LINE
- O-LITE
- OMRON
- ONESTO
- ORBIS
- OSRAM
- PALAZZOLI
- PANASONIC
- PERANO
- PHILLIPS
- POWERMITE
- PRATLEY
- PRO-MAX
- QUADRITALIA
- QUADROVISEU
- RADIANT LIGHTING
- RAVIOLI
- RCCDS
- REEFLITE
- RELE ITALIANA
- RHOMBERG
- ROCKWELL
- RTR
- S.A. LADDER
- SALTEK
- SCHNEIDER
- SELEC
- SENECA
- SIEMENS
- SIRENCO
- SOLAR EDGE
- SOLAR FRONTIER
- SOLID
- SPAZIO
- STARLIT
- STONE STAMCORE
- SWAN
- TC MOTOR CONTROL
- TECHNOALARM
- TECO
- TELEMECANIQUE
- TERASAKI
- TOP TRONIC
- UNION
- UNITHERM
- UNITRONICS
- VACON
- VENTS
- VICTOR
- VOLTEX
- WACO
- WACO ALLBRO
- WAGO
- WEICON
- X TREME
- XPELAIR
- YODAL ALARMS
- ZAMEL
- ZEST



What we do Supply:

PK'S ELECTRICAL WHOLESALERS are Striving to Supply our Customers with All their Needs and Therefore our Supplies and Suppliers are Always Expanding. This is only a Short List of what we do Supply, but our Services are Not Restricted to Only these Products.

- Audio & Visual Alarms
- Automation Products
- Automotive Electrical Components
- Cable Joints
- Cables, Glands & Connectors
- Capacitors & PFCs
- Circuit Breakers, Fuses & Switchgear
- Crane & Vehicle Controls
- Electronics
- Enclosures & Fittings
- Extractor Fans
- Fans, Bug Killers & Hygiene
- Flameproof & Mining
- Flameproof Light Fittings
- Gate Motors
- Gensets & Generators
- Geyser Elements and Thermostats
- Geysers
- GP Wiring, Surfix & Cabtyre
- Hand Tools
- Industrial Lighting
- Instruments & Telemetry
- Lamps
- LED Lighting
- Level Control & Pumps
- Lighting
- Limit & Pressure Switches & Sensors
- Lugs & Ferrules
- Motor Control
- Personal Protective Equipment
- Plugs & Switches
- Power Supplies, Transformers & UPS Systems
- Pushbuttons & Pilot Lights
- PVC & Steel Enclosures
- PVC Conduit & Accessories
- Security Products
- Solar Panels & Lights
- Stove Spares
- Surge & Noise Protection
- Switchboards
- Temperature Controls
- Terminals, Insulators & Copper
- Test Instruments
- Tools - Electrical
- Transformers
- Welding Plugs and Sockets
- Wiring Accessories



PK'S

ELECTRICAL WHOLESALERS